

## **Wireless Access**

This guide details how to connect to the University of Manchester wireless network.

It is divided into sections in the following order :

### **Connecting to the wireless network**

### **Enabling internet access**

### **Disconnecting from the wireless network**

Note that the images within the guide are taken from Windows XP using the native wireless network software, your dialogs may differ from the examples shown.

The University of Manchester wireless network at Wythenshawe Hospital covers the ERC Block atrium area and the Southmoor Restaurant.

IT Services

x 5907

## Connecting to the wireless network

- 1) Windows will display a notification when a wireless network is first in range.



Click on the **Wireless networks detected** message.

Alternatively right click on the Wireless Network Connection icon.



The red cross indicates no active connection.



Click on **View Available Wireless Networks**.

- 2) A list of network within range will be displayed.



Click on **University of Manchester**.

- 3) It will show as selected.



Click on **Connect**.

- 4) An unsecured network dialog window will be displayed.



Click on **Connect Anyway**.

- 5) A network address will be acquired.



- 6) A connection dialog window will display.



- 7) The connection to the University wireless network will be established.



- 8) The Wireless Network Connection icon will change to show a connection.



Live connection.

### Enabling internet access

- 1) Start an internet browser.



- 2) The initial University Wireless Login Acceptable Use page will display.



Click on the box to acknowledge that you have read, understood and accept the **Acceptable Use Policy**.

- 3) The University Wireless Login details will display.



Enter your central services Username and Password, and click on **Log In**.

- 4) On successful authentication your default homepage will be displayed, the connection is now enabled for internet access.
- 5) There is a **10 minute** inactivity timeout on your authenticated session. You may be required to re-authenticate if this period is exceeded.

### Disconnecting from the University wireless network

- 1) Right click on the Wireless Network Connection icon.



Live connection



Click on **View Available Wireless Networks**.

- 2) A list of networks within range will be displayed.



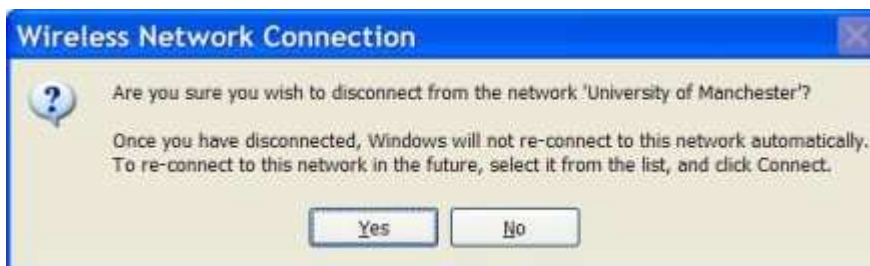
Click on **University of Manchester**.

- 3) It will show as selected



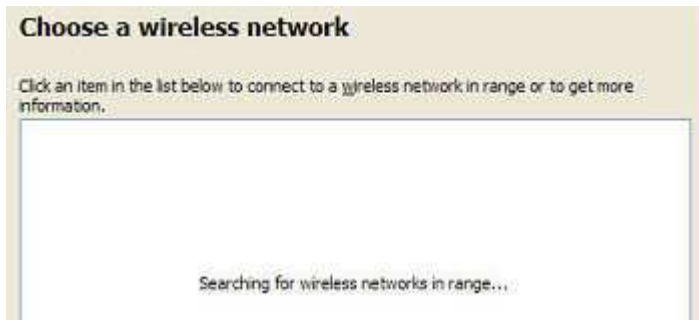
Click on **Disconnect**.

- 4) A confirm disconnect confirm dialog windows will be displayed.



Click on **Yes**.

- 5) The list of available networks will be updated.



- 6) The University wireless network will no longer be connected.



The Wireless Network Connection icon will change to show no connection.



The red cross indicates no active connection.